



AWARE

ALL IN ONE. AWARENESS FOR ALL.



PERFORM WITH
PEACE OF MIND



911 Call Taker & Dispatcher



Patrol Supervisor



SHARE INTEL
IN AN INSTANT



SURFACE CRITICAL
INSIGHTS QUICKER



Intelligence Analyst



SEE YOUR PATROL
AREA CLEARLY



ADD PATROL
COVERAGE... VIRTUALLY



ALL IN ONE. AWARENESS FOR ALL.

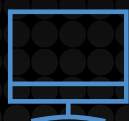
INTELLIGENCE ANALYST

CommandCentral Aware unifies all of your real-time data and video streams into a secure common operational view, automates analysis to surface critical insights and enables instant communication of intelligence to responders in the field.



100+
AGENCIES

Serves over 100 public safety agencies across North America use CommandCentral Aware



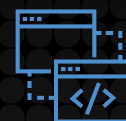
14,000+
USERS

More than 14,000 users of CommandCentral Aware situational awareness software



35,000+
CLOUD-CONNECTED
CAMERAS

Over 35,000 cloud-connected cameras streaming video to CommandCentral Aware



60+
INTEGRATION
PARTNERS

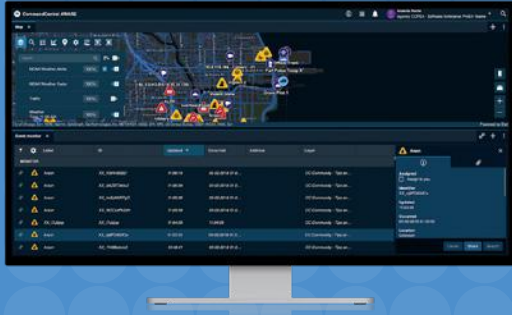
Over 60 telemetry and video integration partners in addition to existing Motorola Solutions integrations



SEE YOUR PATROL AREA CLEARLY

WHETHER IT'S RESPONDING TO AN EMERGENCY OR MANAGING DAY-TO-DAY OPERATIONS, VISIBILITY IS EVERYTHING.

CommandCentral Aware allows you to see all of your resources and events on a single, highly configurable map. With 9-1-1 calls, CAD incidents, radio and vehicle locations, sensors, cameras and more all together, you'll uncover new insights that inform better decisions.



**40%
REDUCTION**
in violent crime
by Detroit PD after
implementing
**CommandCentral
Aware**

UNIFIED RESOURCE & INCIDENT MAPPING

Bring together event and device locations on an ESRI-based map. Layer almost any GIS dataset from ArcGIS as well as traffic, weather, boundaries, landmarks, buildings and floor plans for enriched spatial orientation.

DRAG-AND-DROP MODULAR USER INTERFACE WITH CUSTOM FILTERING

Configure the CommandCentral Aware display across one, two, or three screens and personalize to meet individual role needs and workflow preferences. Create and save various views of a user's map and monitor using filters based on type of event, device, geofence and other agency-defined or custom criteria.

RESOURCE AFFILIATION & UNIT MANAGEMENT

Preconfigure units and add associated resources to them to simplify your interface and more easily manage unit location and communications.

CONFIGURABLE EVENT MONITOR & FREE-TEXT SEARCH

Alongside the map, view events and device alerts in a table structure. Add, remove and sort data columns for individual user preferences. Quickly access active resources or events on the map using a free-text search bar.

ADJUSTABLE RESOURCE REPORTING & BREADCRUMB-STYLE TRACKING

Visualize the path of travel of devices including radios for up to 30 minutes. Device location is reported every 15 seconds but can be reconfigured to meet your needs and temporarily overridden to a three second cadence during emergencies.

MOBILE COMPATIBLE USER EXPERIENCE

Access the map and event monitor from any Android or iOS tablet or smartphone to extend operational visibility to anywhere you have an internet connection.





ADD PATROL COVERAGE... VIRTUALLY

THE PRESENCE OF A VIDEO CAMERA IS ALMOST A GIVEN THESE DAYS - ANYWHERE YOU ARE. THE CHALLENGE IS ACCESSING THEM WHEN NEEDED.

CommandCentral Aware enables you to view video from almost any source, including all major video management providers, map and group cameras, receive analytic alerts and even pan, tilt and zoom, so you always have a clear line of sight.

VMS-AGNOSTIC FIXED VIDEO STREAMING

CommandCentral Aware enables you to view video from almost any source, map and group cameras, receive analytic alerts and even pan, tilt and zoom.

INTEGRATED VIDEO ANALYTIC ALERTS

Video analytic alerts from a compatible video management system (VMS) like Avigilon Control Center can be ingested as events, just like a CAD incident, to improve threat detection and response.

NATIVE PAN-TILT-ZOOM CAMERA CONTROL

Natively access pan, tilt, and zoom (PTZ) controls from compatible cameras and video management systems directly from within CommandCentral Aware.

REWIND, BOOKMARK, CLIP & SNAPSHOT

Rewind camera feeds to replay an incident or a response. Bookmark critical moments and clip or snapshot video footage to share it with responders or save as evidence.

CUSTOM CAMERA ASSOCIATION, GROUPS & LABELING

View camera locations, even within floor plans, and open feeds from the map. During a critical event, quickly identify nearby cameras and simultaneously open all with one click. Group cameras from across systems to quickly open all live streams available in a specific location.

VIDEO VIEWING & FEATURE PERMISSIONS

Apply user permissions by cameras or camera groups to control who can view video streams, review historical footage, clip, snapshot and export.



A major city manages as many as 10,000 video feeds*

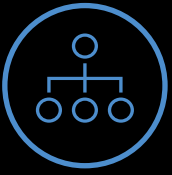


“Having the technology is like having a third person in each patrol car.”

Chief James White
Detroit Police Department



*2017 Motorola Solutions Crime Analytics Survey



SURFACE CRITICAL INSIGHTS QUICKER

HAVING MORE DATA CAN LEAD TO SENSORY OVERLOAD AND MISSING WHAT'S ACTUALLY IMPORTANT.

CommandCentral Aware reduces this burden with a workflow automation rules engine that can be configured for your specific needs. With attention focused, users can assign to an event and search or query external databases for critical information to support an effective response.

WORKFLOW AUTOMATION RULES ENGINE

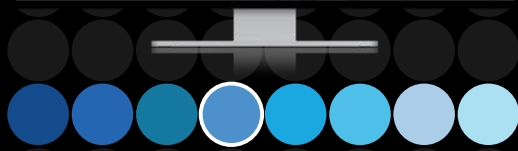
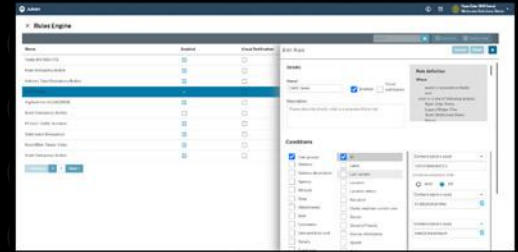
Create if-this-then-that rules with "AND" and "OR" operators to automate actions and eliminate manual information analysis and processing.

DIRECTED PATROL ZONE CREATION & ALERTS

Create area and unit specific, time-based checkpoints that verify a patrol has occurred including entry and exit alerts as well as notifications for incompleteness.

INTEGRATED SEARCH & DATABASE QUERY

Initiate a search or query across various sources on any highlighted text to gather more context on a situation and better inform a response.



EXTRACT DEEPER INSIGHTS FOR MAXIMUM OPERATIONAL IMPACT

- SEARCH ENGINE
- FEDERATED QUERY
- LPR QUERY

HISTORICAL INCIDENT RECREATION & REPLAY

Review responses through the lens of mapped historical events, resources and video. Replay the incident as it unfolded to expedite investigations and inform future workflows.



SHARE INTEL IN AN INSTANT



DISPARATE SYSTEMS LIMIT YOUR TEAM'S ABILITY TO COLLABORATE AND COMMUNICATE DATA ACROSS THE ENTIRE WORKFLOW.

With CommandCentral Aware, share location-based information across the entire agency workflow, communicate vital intel to the field and easily export data to evidence. You can even share customized map layers with the team for improved efficiency and collaboration.



**45%
REDUCTION**
in crime by City of
Springfield, MA
after implementing
CommandCentral
Aware (2018)

NATIVE RADIO COMMUNICATIONS

Interface directly to our MCC7500e radio console for communication control access to interact with talkgroups and monitor device statuses.

COLLABORATION & DRAWING TOOLS

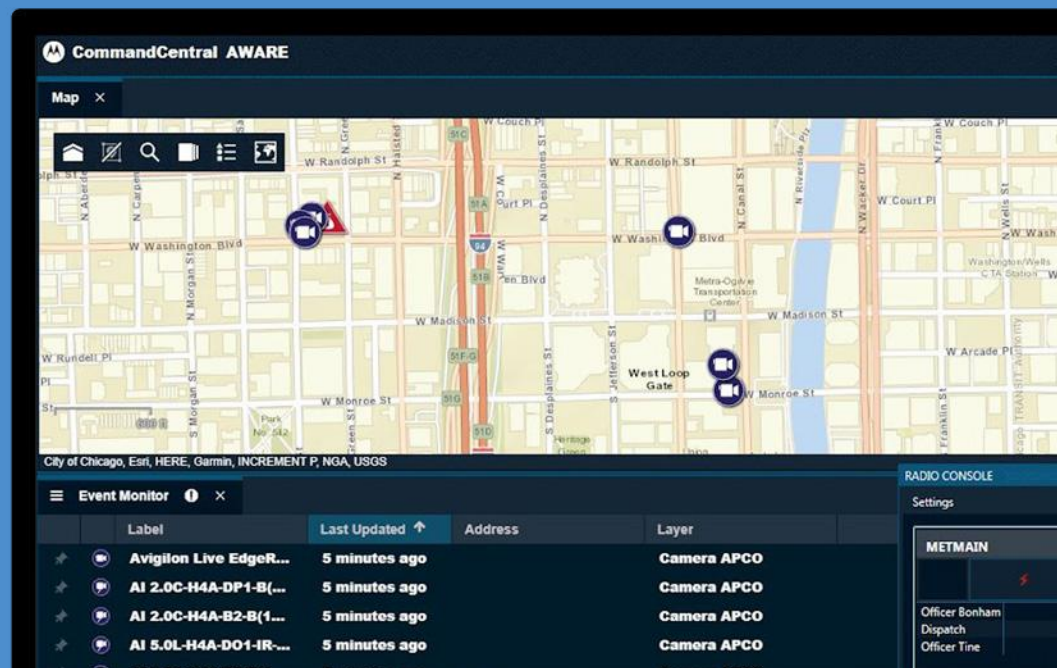
Draw polygons, polylines and points on the map with coloring, icons and annotations. Drawings are visible by all users as a map layer to improve coordination.

COMMANDCENTRAL EVIDENCE EXPORT

Send video clips and snapshots with time, date, camera location and user metadata, directly to CommandCentral Evidence. Add an incident ID to improve organization.

EMBEDDED EMAIL COMMUNICATIONS

Share richer situational intelligence including video clips, snapshots and more comprehensive incident updates via email sent from within CommandCentral Aware.





PERFORM WITH PEACE OF MIND

**DON'T SACRIFICE PEACE OF MIND.
HAVE CONFIDENCE IN YOUR SECURITY.**

CommandCentral Aware is a cloud-native solution that conforms to many of the highest security standards with CJIS Security Policy compliance, FedRAMP certification, annual SOC 1 and 2 audits, and ISO 27001, 27017 and 27018 certifications. It is also routinely and automatically updated so you stay protected.

FedRAMP CERTIFIED & CJIS COMPLIANT

CommandCentral Aware is compliant with Criminal Justice Information System (CJIS) Security Policy requirements and can be hosted in a FedRAMP certified cloud.

ANNUAL SOC 1 & 2 SECURITY AUDITING

CommandCentral Aware is audited annually against the Service Organization Control 1 and 2 (SOC 1 and SOC 2) reporting framework for secure data management.

ISO 27001, 27017 & 27018 CERTIFIED

CommandCentral Aware is evaluated and continually audited to achieve International Organization for Standardization (ISO) 27001, 27017 and 27018 certifications.

AUTOMATIC, ROUTINE SECURITY UPDATES

CommandCentral Aware underwent security reviews at each phase of development, but is continually assessed for vulnerabilities and updated with patches automatically.

COMMAND CENTRAL

CONNECTED. COLLABORATIVE. COMPLETE.



INCIDENT AWARENESS

COMMUNITY ENGAGEMENT



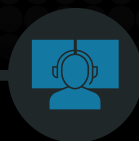
CITIZEN

EMERGENCY CALL MANAGEMENT



9-1-1 CALL TAKER

VOICE & COMPUTER AIDED DISPATCH



DISPATCHER

INCIDENT MANAGEMENT

REAL-TIME INTELLIGENCE OPERATIONS



INTELLIGENCE ANALYST

FIELD RESPONSE & REPORTING



FRONTLINE RESPONDER

POST-INCIDENT RESOLUTION

RECORDS & EVIDENCE MANAGEMENT



RECORDS SPECIALIST

ANALYSIS & INVESTIGATION



CRIME ANALYST

JAIL & INMATE MANAGEMENT



CORRECTIONS OFFICER

THE INDUSTRY'S MOST COMPLETE SOFTWARE SUITE

You depend on solutions that help deliver on the promise of a safer world. CommandCentral Aware and other applications in our CommandCentral software suite are designed to bring clarity to decisions and simplify collaborative workflows. From call to case closure, CommandCentral connects all data to create actionable intelligence, eliminates barriers to heighten collaboration and delivers the complete, 360° Incident

Our CommandCentral software suite is unified with voice, video and analytics, creating an integrated ecosystem for public safety. Individually, every Motorola Solutions product and service makes the world safer. United, they are exponentially more powerful. Let's build the future of safety together.

For more information about CommandCentral Aware, please visit:
www.motorolasolutions.com/aware



Motorola Solutions, Inc. 500 West Monroe Street, Chicago, IL 60661 U.S.A. 800-367-2346 motorolasolutions.com

MOTOROLA, MOTO, MOTOROLA SOLUTIONS and the Stylized M Logo are trademarks or registered trademarks of Motorola Trademark Holdings, LLC and are used under license. All other trademarks are the property of their respective owners. © 2022 Motorola Solutions, Inc. All rights reserved. 11-2022